

GENUINE THERMO KING PARTS AND ACCESSORIES

CATALOGUE 2024

UNIT MANAGEMENT

Remote Status Light and Combination Display
Controller Option
Hose Management Kit
Hose Cover
Aluminium Evaporator Guards
Harness Extension
Snow Kit
Snow Kit for SLX
SLX Ferry Protection Bull Bars
Top Grill
Muffler Kit

POWER MANAGEMENT

EnergyOne Battery
Low Voltage Disconnect
Tail Lift Charger for Trailer
Battery Tester
Solar Panel

CONNECTED SOLUTIONS

TracKing
TempuTrak
TrailerTrak
Wintrac

INDEPENDENT TEMPERATURE MANAGEMENT SOLUTIONS

USB Data Logger
USB Data Collector
DAS Data Acquisition System
TouchPrint printer
TouchPrint Data Logger
Cable Thermometer
Door Switch
AIA Temperature Sensor
Energy Curtain
Top Freeze Protect
Handheld Sensor for CargoWatch Data Logger
Null-host Kit

FUEL MANAGEMENT

Fuel Tank Cleaning Unit
Electronic Fuel Capture
GreenTech Fuel Filtration Kit
Fuel Storage
90 l Polyethylene Fuel Tank
Aluminium Fuel Tank
UltraSonic Fuel Sensor

AIR MANAGEMENT

Air Chute

COLD CUBE™

ColdCube™ Containers
ColdCube™ Connect - Pharma Containers

THERMOKARE

ThermoKare Service Solutions
Support Solutions
Premium Solutions

PART NUMBER OVERVIEW

Part number overview
Part number overview (continued)

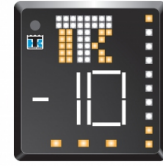


Unit Management

Remote Status Light and Combination Display

Keep in control while on the move

Thermo King’s Remote Status Light and Combination Displays are designed to increase driver awareness, enabling early corrective action and reducing the risk of load loss and costly call-out service. Four models are available, allowing drivers to monitor unit operation status, fuel level and load temperature individually or all in one. The stand alone temperature combo and status unit can operate on non-SR3 unit.



Key Features

- Designed with driver safety and comfort in mind
- 3-in-1 display-unit status, box temperature and fuel level monitored from driver’s seat
- Clear visibility day and night with auto-dimming, making it easy for drivers to read
- 3 temperature zones displayed for multi temperature units
- CE-approved and tested in extreme temperature environments
- Fuel combo display is compatible with Thermo King and other fuel tanks when used with Thermo King’s range of electronic fuel gauges
- Temperature Combo can work independent of the SR3 controller with 12V power supply
- Installation options to suit your needs: Corner mount, flush mount or centre mount

REMOTE STATUS LIGHT AND COMBINATION DISPLAYS	PART NO		
	UK (right side drive)	EU (left side drive)	Flush mount
Status only display	400985	400984	400989
Triple Combo Display (status & temperature & fuel level w/o gauge)	401304	401303	401304
Temperature Combo	401121	401120	
Combo Sales aid tool (handheld)	2041908	2041908	

Controller Option



SR-3 EXTENSION

The SR-3 extension permits repositioning of the SR-3 control panel close to the operator on high trailers and in rail or intermodal applications. Dropdown HMI for SR-3 controller for SLX plastic control box – a customised solution to enable easy and safe access to the HMI.



DESCRIPTION	PART NO
Dropdown HMI	900356

SR-3 Rear Remote Control

The SR-3 rear remote control allows control of the refrigeration unit from inside the rear of the trailer. This application is particularly suitable for large logistics depots, enabling energy-efficient and safe loading. This unit is also backward compatible with SR-2 models.



DESCRIPTION	PART NO
Rear remote SLXi - Trailer single temp.	401008
Rear remote SLXi - Trailer multi temp.	401031
Rear remote Truck SR-3 single temp.	401061
Rear remote Truck SR-3 multi temp.	401062
Rear remote Cryo CT-15	401078
DIN adaptor	925199

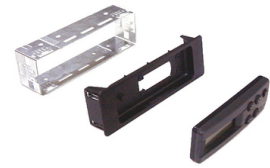
DIN Adaptor

The DIN adaptor box permits the adaption of the DSR controller to the vehicle dashboard. The aesthetically designed box allows placement of the DSR controller in any

available radio slot compartment in the driver cab.

Key Features

- User interface at your fingertips
- Faster installation
- Professional, aesthetic finish




Kit Dropdown HMI 

The SR-3 extension permits repositioning of the SR-3 control panel close to the operator on high trailers and in rail or intermodal applications. Dropdown HMI for SR-3 controller for SLX plastic control box – a customised solution to enable easy and safe access to the HMI.



AFTERMARKET PART NO	POINT OF SALE PART NO
900356TKA	700091

Dropdown HMI 

The SR-3 extension permits repositioning of the SR-3 control panel close to the operator on high trailers and in rail or intermodal applications. Dropdown HMI for SR-3 controller for SLX plastic control box – a customised solution to enable easy and safe access to the HMI.



AFTERMARKET PART NO	POINT OF SALE PART NO
	904151

Hose Management Kit

Protects your electric harness and fuel line hoses against everyday hazards and provides an aesthetically pleasing installation to complement your unit.

Key Features

- Protect fuel line from the elements
- Protect electrical harness from damage
- Individual routing
- Easy servicing



DESCRIPTION	PART NO
Hose Management Tilt Cab	900421

Hose Management Tilt Cab

Protects your electric harness and fuel line hoses against everyday hazards and provides an aesthetically pleasing installation to complement your unit.

Key Features

- Protect fuel line from the elements
- Protect electrical harness from damage
- Individual routing
- Easy servicing



AFTERMARKET PART NO	POINT OF SALE PART NO
900421TKA	700955

Hose Cover

Protection against all climate adversities

Provides full protection of hoses and cables on the road and full resistance under the worst climate conditions. Designed to the very highest aesthetic standards to promote brand image.



Key Features

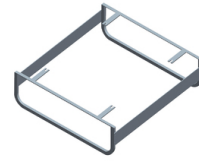
- Full protection against exterior damage Exceptional durability
- User-friendly installation
- For box installations only (no vans)

DESCRIPTION	PART NO
Kit Hose Covers B100/C100/C200/C300/V100/ V200/V300	900395
Kit Hose Covers V400/V500/V700	900396

Aluminium Evaporator Guards

Maximum protection during loading and unloading

Evaporators are crucial when it comes to safeguarding your cargo. During loading and unloading, however, they are susceptible to damage from forklift trucks, pallets, crates, bins, boxes and other cargo.



Key Features

- Full protection from exterior damage
- Exceptional light weight durable aluminium painted white
- Available for all multi temperature truck and trailer models
- User-friendly installation
- Quick access for evaporator maintenance
- Four mounting plates for secure fastening
- Installation components included in the kit

EVAPORATOR GUARDS	PART NO
	Hinged version
Evaporator Guard S3	900432
Evaporator Guard S2	900319

Harness Extension

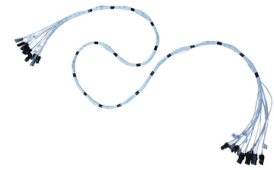
The 2, 3, 4, 5 or 6 metre-long Harness Extension allows evaporators to be located to suit any customer requirement and is extremely easy to install (plug-and-play connection). The Harness Extensions provide full flexibility to position evaporators anywhere in the truck, especially in multi temperature applications. The Harness Extensions are compatible with ES100, ES150 and ES200 evaporators and can therefore be applied in V-100, V-200 and V-300 units in both single temperature and multi temperature applications.



DESCRIPTION	PART NO
Kit Harness Extension 2 m	702552
Kit Harness Extension 4 m	703613
Kit Harness Extension 5 m	703614

Harness CAN-Extension

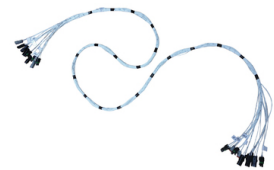
The 2, 3, 4, 5 or 6 metre-long Harness Extension allows evaporators to be located to suit any customer requirement and is extremely easy to install (plug-and-play connection). The Harness Extensions provide full flexibility to position evaporators anywhere in the truck, especially in multi temperature applications. The Harness Extensions are compatible with ES100, ES150 and ES200 evaporators and can therefore be applied in V-100, V-200 and V-300 units in both single temperature and multi temperature applications.



AFTERMARKET PART NO	POINT OF SALE PART NO
423026	

Add Extended Harness And Hose 30SR ESA A/D

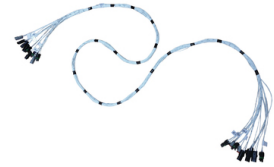
The 2, 3, 4, 5 or 6 metre-long Harness Extension allows evaporators to be located to suit any customer requirement and is extremely easy to install (plug-and-play connection). The Harness Extensions provide full flexibility to position evaporators anywhere in the truck, especially in multi temperature applications. The Harness Extensions are compatible with ES100, ES150 and ES200 evaporators and can therefore be applied in V-100, V-200 and V-300 units in both single temperature and multi temperature applications.



AFTERMARKET PART NO	POINT OF SALE PART NO
	703487

Add Extended Harness And Hose 50SR 230/3/50 ESA

The 2, 3, 4, 5 or 6 metre-long Harness Extension allows evaporators to be located to suit any customer requirement and is extremely easy to install (plug-and-play connection). The Harness Extensions provide full flexibility to position evaporators anywhere in the truck, especially in multi temperature applications. The Harness Extensions are compatible with ES100, ES150 and ES200 evaporators and can therefore be applied in V-100, V-200 and V-300 units in both single temperature and multi temperature applications.



AFTERMARKET PART NO	POINT OF SALE PART NO
	703489

Add Extended Harness And Hose 50SR 400/3/50 ESA

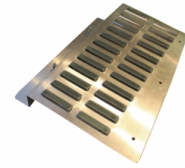
The 2, 3, 4, 5 or 6 metre-long Harness Extension allows evaporators to be located to suit any customer requirement and is extremely easy to install (plug-and-play connection). The Harness Extensions provide full flexibility to position evaporators anywhere in the truck, especially in multi temperature applications. The Harness Extensions are compatible with ES100, ES150 and ES200 evaporators and can therefore be applied in V-100, V-200 and V-300 units in both single temperature and multi temperature applications.



AFTERMARKET PART NO	POINT OF SALE PART NO
	703488

Snow Kit

Thermo King snow covers are designed to protect your unit against extreme climate conditions. With their aerodynamic design, snow covers prevent the build-up of snow and ice on the unit’s fans which could otherwise lead to downtime and further maintenance costs, resulting in longer running times for your unit.



Key Features

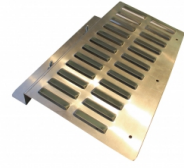
- Protect condenser unit against snow and ice
- Aerodynamic design
- Reduce customer downtime and costs
- Easy installation
- Allow quick access for maintenance

DESCRIPTION	PART NO
Snow Cover small	900381
Snow Cover large	900379

	AFTERMARKET PART NO	POINT OF SALE PART NO
SLXi	900440	702941
UT series	902519	703547

Snow Kit for SLX

Thermo King snow covers are designed to protect your unit against extreme climate conditions. The snow cover, specifically designed for SLX, prevents the build-up of snow and ice on the unit’s blowers and pulleys which could otherwise lead to downtime and further maintenance costs, resulting in longer running times for your unit.



Key Features

- Protect refrigeration unit against snow and ice
- Operates on continuous and cycle sentry
- Reduce customer downtimes and costs
- Easy installation
- Allow quick access for maintenance

DESCRIPTION	PART NO
Snow Kit for SLX	900440

Top Grill

The Top Grill is designed to protect your unit from the rigours of transport refrigeration. This easy-to-install, durable steel grill ensures a longer life for your unit by guarding it against debris and other foreign matter entering the system.

DESCRIPTION	PART NO
Top Grill-Condenser Blower Protection Kit	927583

Top Grill-Condenser Blower Protection Kit

The Top Grill is designed to protect your unit from the rigours of transport refrigeration. This easy-to-install, durable steel grill ensures a longer life for your unit by guarding it against debris and other foreign matter entering the system.

AFTERMARKET PART NO	POINT OF SALE PART NO
927583	

Muffler Kit

The Thermo King muffler eliminates vibration and noise in the cab interior of small vehicles. The muffler is attached to the refrigeration system to eliminate vibration transfer from the unit to the driver cab, enhancing user comfort and ease of use.

Key Features

- Eliminate vibration in driver cab
- Designed with driver safety and comfort in mind
- Maximise driver time on the road
- Easy to install



DESCRIPTION	PART NO
Muffler Kit	6060197

MUFFLER EXHAUST EXTENSION SLXi

The Thermo King muffler eliminates vibration and noise in the cab interior of small vehicles. The muffler is attached to the refrigeration system to eliminate vibration transfer from the unit to the driver cab, enhancing user comfort and ease of use.

Key Features

- Eliminate vibration in driver cab
- Designed with driver safety and comfort in mind
- Maximise driver time on the road
- Easy to install



AFTERMARKET PART NO	POINT OF SALE PART NO
900430TKA	



Power Management

EnergyOne battery

Start right every time

Seasonal use, stop/start operation and temperature extremes can stress a battery to the point where it fails to do its job. Our EnergyOne® range offers the perfect solution for both conventional and CryoTech applications. For your business to excel, your refrigerated fleet has to be totally dependable. No matter what the weather, you need a battery that will start up your units day in, day out. The alternative is downtime, repair cost and missed deadlines.



	ENERGYONE® GOLD	ENERGYONE® PLATINUM	ENERGYONE® CRYO
Voltage	12	12	12
Battery Type	Flooded	AGM	AGM
Cold Cranking Amps (CCA)	760	880	1150
Reserve Capacity	175 min.	135 min.	210 min.
C20 Capacity (Amp hours)	92 Ah	68 Ah	100 Ah
Warranty	2 years	2 years	2 years
Weight	21.3 kg	22.0 kg	36.2 kg
Shelf life	6 months	2 years	2 years
Service Part Number	2030765	2030777	2030798

EnergyOne® Platinum



AFTERMARKET PART NO	POINT OF SALE PART NO
2030777	088868

EnergyOne® Cryo

Same technology as EnergyOne® Platinum combined with higher capacity to meet the power requirements of a cryogenic application.



AFTERMARKET PART NO	POINT OF SALE PART NO
2030798	

EnergyOne® Gold

Traditional flooded battery with high cold cranking amps (CCA) and the energy capacity to ensure a long service life.



AFTERMARKET PART NO	POINT OF SALE PART NO
2030765	088239

Extra Long Life Battery Box

Start right every time

Seasonal use, stop/start operation and temperature extremes can stress a battery to the point where it fails to do its job. Our EnergyOne® range offers the perfect solution for both conventional and CryoTech applications. For your business to excel, your refrigerated fleet has to be totally dependable. No matter what the weather, you need a battery that will start up your units day in, day out. The alternative is downtime, repair cost and missed deadlines.



AFTERMARKET PART NO	POINT OF SALE PART NO
	088942

Low Voltage Disconnect

Prevent battery drainage with the low voltage disconnect

Thermo King’s Low Voltage Disconnect monitors battery voltage when the unit is turned off and automatically disconnects your battery at low voltage. This prevents auxiliary devices or other upgrades from draining your battery. The Low Voltage Disconnect protects your unit so that you will not have the inconvenience of downtime as a result of a dead battery. The Low Voltage Disconnect is now available in a 12V and 24V option for Trailer, Cryo and other 24V applications.



Key Features

- Extends battery life
- 2 year warranty
- Maintenance-free
- Withstands extreme temperatures
- Resistant to vibration
- Reduces environmental impact
- Prevents service call-out, downtime and battery replacement
- Resolves issues before they become a problem
- Maximises your time on the road

DESCRIPTION	PART NO
LVD (Low Voltage Disconnect) Kit	401344

LVD (Low Voltage Disconnect) Kit

Prevent battery drainage with the low voltage disconnect

Thermo King’s Low Voltage Disconnect monitors battery voltage when the unit is turned off and automatically disconnects your battery at low voltage. This prevents auxiliary devices or other upgrades from draining your battery. The Low Voltage Disconnect protects your unit so that you will not have the inconvenience of downtime as a result of a dead battery. The Low Voltage Disconnect is now available in a 12V and 24V option for Trailer, Cryo and other 24V applications.



Key Features

- Extends battery life
- 2 year warranty
- Maintenance-free

- Withstands extreme temperatures
- Resistant to vibration
- Reduces environmental impact
- Prevents service call-out, downtime and battery replacement
- Resolves issues before they become a problem
- Maximises your time on the road

AFTERMARKET PART NO	POINT OF SALE PART NO
401344	

KIT LVD,A-SERIES

Prevent battery drainage with the low voltage disconnect

Thermo King’s Low Voltage Disconnect monitors battery voltage when the unit is turned off and automatically disconnects your battery at low voltage. This prevents auxiliary devices or other upgrades from draining your battery. The Low Voltage Disconnect protects your unit so that you will not have the inconvenience of downtime as a result of a dead battery. The Low Voltage Disconnect is now available in a 12V and 24V option for Trailer, Cryo and other 24V applications.



Key Features

- Extends battery life
- 2 year warranty
- Maintenance-free
- Withstands extreme temperatures
- Resistant to vibration
- Reduces environmental impact
- Prevents service call-out, downtime and battery replacement
- Resolves issues before they become a problem
- Maximises your time on the road

AFTERMARKET PART NO	POINT OF SALE PART NO
401566	401566

MODULE LVD (LOW VOLTAGE DISCONNECT)

Prevent battery drainage with the low voltage disconnect

Thermo King’s Low Voltage Disconnect monitors battery voltage when the unit is turned off and automatically disconnects your battery at low voltage. This prevents auxiliary devices or other upgrades from draining your battery. The Low Voltage Disconnect protects your unit so that you will not have the inconvenience of downtime as a result of a dead battery. The Low Voltage Disconnect is now available in a 12V and 24V option for Trailer, Cryo and other 24V applications.



Key Features

- Extends battery life
- 2 year warranty
- Maintenance-free
- Withstands extreme temperatures
- Resistant to vibration
- Reduces environmental impact
- Prevents service call-out, downtime and battery replacement
- Resolves issues before they become a problem
- Maximises your time on the road

AFTERMARKET PART NO	POINT OF SALE PART NO
422929	

LVD Option

Prevent battery drainage with the low voltage disconnect

Thermo King’s Low Voltage Disconnect monitors battery voltage when the unit is turned off and automatically disconnects your battery at low voltage. This prevents auxiliary devices or other upgrades from draining your battery. The Low Voltage Disconnect protects your unit so that you will not have the inconvenience of downtime as a result of a dead battery. The Low Voltage Disconnect is now available in a 12V and 24V option for Trailer, Cryo and other 24V applications.



Key Features

- Extends battery life
- 2 year warranty
- Maintenance-free
- Withstands extreme temperatures
- Resistant to vibration

- Reduces environmental impact
- Prevents service call-out, downtime and battery replacement
- Resolves issues before they become a problem
- Maximises your time on the road

AFTERMARKET PART NO	POINT OF SALE PART NO
	049619

LVD Option (SLXi)

Prevent battery drainage with the low voltage disconnect

Thermo King’s Low Voltage Disconnect monitors battery voltage when the unit is turned off and automatically disconnects your battery at low voltage. This prevents auxiliary devices or other upgrades from draining your battery. The Low Voltage Disconnect protects your unit so that you will not have the inconvenience of downtime as a result of a dead battery. The Low Voltage Disconnect is now available in a 12V and 24V option for Trailer, Cryo and other 24V applications.



Key Features

- Extends battery life
- 2 year warranty
- Maintenance-free
- Withstands extreme temperatures
- Resistant to vibration
- Reduces environmental impact
- Prevents service call-out, downtime and battery replacement
- Resolves issues before they become a problem
- Maximises your time on the road

AFTERMARKET PART NO	POINT OF SALE PART NO
	TKSLXI-LVD-01

Tail Lift Charger for Trailer

The Thermo King Tail Lift Charger is an independent unit that charges the batteries (2 X 12 V in series) on the tail lift of a trailer unit, using the reefer units' alternator. The independent charger converts a 12V supply to 24V-needed for tail lift electric motor models. The unit has been designed to give priority to the reefer unit, and is independent of the pulley drive systems. Lower power = lower fuel consumption. The Tail Lift Charger will only function when the reefer unit is in operation, ensuring the protection of your reefer battery. It allows customers to operate tail lift and lights anytime and anywhere when the tractor is not connected.

Key Features

- Power for tail lift batteries from reefer unit
- Power for internal lighting through tail lift
- Configured with 2 chargers for longer life & lower power consumption
- A safer and more reliable method of charging than retrofit alternative
- Quick and easy installation across different models
- Enclosure box IP rated and vibration resistant
- Only operates when reefer unit is running

DESCRIPTION	PART NO
24V Tail Lift Battery Charger	401158
120 alternator	401235
Harness kit 9 metres	401012
Harness kit 14 metres	401176
Harness kit 18 metres	401013

Battery Tester

Quick, easy and accurate analysis of battery condition

This easy to use, robust tool not only checks battery condition but also provides an analysis of the whole electrical system. It is the manufacturer’s recommended tool for Thermo King batteries, both conventional wet cell and absorbed glass mat technology.

Key Features

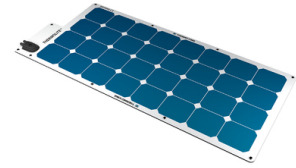
- Safe and easy to use
- Produces accurate test results in seconds
- Simple interface eliminates errors and guesswork
- Recommended for Thermo King warranty procedure
- Saves time and money by improving battery and electrical diagnostics
- Avoids unexpected breakdowns through preventative maintenance checks
- Works on multiple battery types and rating systems
- Can be used on refrigeration equipment and on vehicle batteries

DESCRIPTION	PART NO
Battery Tester	2041922

ThermoLite™ Solar Panel

Keeps batteries charged even when equipment is idle

Batteries live in an extremely harsh environment. Seasonal use and stop/start operation such as Cycle-Sentry result in too little engine run-time to complete a charging cycle. Temperature extremes and demanding applications such as sea-going containers can take their toll on battery health. The solution is simple. Thermo King’s ThermoLite™ solar panel will provide enough charge to keep a battery in optimum condition, even where sunlight is limited.



Key Features

- Generate ample charging current even in low light conditions, ensuring that the unit battery will stay charged, even in winter.
- Exceptional efficiency delivers greater charge than competitor systems.
- Low profile design for height restrictions & easy installation.
- Simple, rapid 60 minute installation on any application. Kit includes all necessary components under one part number.
- Tests in extreme weather conditions prove exceptional durability of sealed electronics and flexible polymer cells.
- Extreme durability and resistance to trailer washing and chemical cleaning process.
- Full 2 year Thermo King warranty on parts.

Applications

ThermoLite™ solar panels are particularly fit for these 3 applications:

- **On tractor roof (24V):**
Extend your tractor’s battery utilization and life and save on battery exchanges, breakdowns and fuel consumption 80W-220W
- **For our Thermo King reefer unit (12V):**
Stay connected. Extend your battery lifetime, save fuel and CO2. Up to 110W
- **For tail lift (24V):**
Keeps your tail lift running and your batteries charged. Up to 220W

DESCRIPTION	PART NO TRAILER	PART NO TRUCK
Solar Panel 110W 12V	401392	401412
Solar Panel 40W 12V	401410	401411

DESCRIPTION	BASE KIT	EXTENSION KIT
-------------	----------	---------------

POWER MANAGEMENT



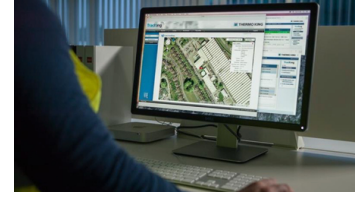
Solar Panel 110W 24V	401439	401440
Solar Panel 40W 24V	401438	401444



Connected Solutions

Telematics Hardware

Thermo King’s telematics hardware is an innovative, easy to use GPRS/GPS system that gives perishable goods transporters visibility of their assets from their desktops. Having real-time temperature, location and alarms information on their refrigerated fleets increases their operational efficiency and reduces incidences of cargo loss. Thermo King’s telematics hardware allows transporters to guarantee product integrity and on-time delivery to customers. The telematics device offers direct connection to any Thermo King controller and Data Logger allowing access to critical information on the asset and on the load. The intuitive, customisable and multilingual web interface provides operations managers and logistic coordinators visibility and traceability through the cold chain, with dashboards and an extensive set of reports.



DESCRIPTION	PART NO
KIT BLUEBOX TRACKING E200	401494
BLUEBOX KIT WITHOUT CONNECTION FOR TOUCHLOG	000170FBK
BLUEBOX KIT WITH CONNECTION FOR TOUCHLOG	000171FBK
KIT BLUEBOX2 TRACKING RETROFIT SLX/SLXE/SLXI	401658
KIT BLUEBOX2 T1000/1200	401724
KIT BLUEBOX2 TOUCHLOG T SERIES T1000/1200	401759
KIT RETROFIT BLUEBOX2 UT-R	401740
KIT BLUEBOX2 TOUCHLOG UT-R	401748
KIT BLUEBOX LITE 1WAY TOUCHLOG READY	401694
KIT BLUEBOX LITE 2WAY W/INCAB NO TOUCHLOG	401747
KIT BLUEBOX LITE 2WAY NO TOUCHLOG	401773
KIT BLUEBOX LITE 1WAY WITH TOUCHLOG	401696

Wintrac 

Fast, easy-to-use Windows™ based reporting utility for Thermo King Data Loggers

Key Features

- Stable performance, easy downloads and fast downloading speeds
- Fast performance analysis — easily define and search for critical data you need
- Innovative, easy-to-use graphical user interface
- Automatic, comprehensive management of files
- Fast, flexible viewing of graph and table reports
- Quick and convenient setting of trip headers
- Easy retrieval and setting of data loggers parameters
- Comprehensive trip file import/export capabilities
- Display of detailed information from each compartment on multi temperature trailers
- Downloading of selected dates from TouchPrint and TKDL data loggers



WINTRAC DESCRIPTION	PART NO
Wintrac 5.7 full system (CD format)	2043111
Wintrac 5.7 upgrade version	2043112

Trailer Assist Premium

Trailer Assist Premium extends control and visibility of your fleet beyond your refrigeration equipment, giving you new insights about your trailer’s operating conditions. With Trailer Assist Premium you get a complete picture of your fleet’s performance, so you can operate smarter. Maximize uptime, optimize tire performance and fuel consumption while also keeping your driver safe. Trailer Assist Premium: Total control. Because you need it.



Broaden your view of fleet performance

- Optimize routes, extend the lifespan of basic parts, and track vehicles through their VINs
- A complete view of all trailer and reefer alarms and notifications via one app: TK Notify

DESCRIPTION	PART NO
KIT TRAILER ASSIST WABCO STANDARD W/OUT SMARTBOARD	401474
KIT- TRAILER ASSIST WABCO PREMIUM	401475
KIT- TRAILER ASSIST - WABCO STANDARD W/SMARTBOARD	401476
TX-TRAILERPULSE WITH BATTERY	3462920000
TX-TRAILERPULSE – HALDEX Gen. 1 + 2 - 2m	4490400010
TX-TRAILERPULSE – HALDEX Gen. 1 + 2 - 5m	4490400040
TX-TRAILERPULSE – HALDEX Gen. 3 - 2m	4490400020
TX-TRAILERPULSE – HALDEX Gen. 3 - 5m	4490400050
TX-TRAILERPULSE - HALDEX Gen. 4 - 5m	5540510110
TX-TRAILERPULSE – KNORR G1/G2.0/G2.1/G2.2 - 2m	4490400030
TX-TRAILERPULSE – KNORR G1/G2.0/G2.1/G2.2 - 5m	4490400060
TX-TRAILERPULSE - WABCO E + ELEX CABLE	4499060600
TX-TRAILERPULSE – WABCO E + ELEX + Smartboard OR OptiTire CABLE	4499252530
TX-TRAILERPULSE – WABCO E CABLE	4499130500
TX-TRAILERPULSE - WABCO E + SMARTBOARD OR OPTITIRE CABLE	4499162530
TX-TRAILERPULSE – WABCO E + Smartboard/OptiTire/OptiLink CABLE	4499343300
TX-TRAILERPULSE – WABCO E + OptiTire + ECAS CABLE	4499442170
TX-TRAILERPULSE – WABCO E PREMIUM + GIO5 CABLE (2m)	4499270200
TX-TRAILERPULSE – WABCO E PREMIUM + GIO5 CABLE (5m)	4499270500
TX-TRAILERPULSE – WABCO E PREMIUM + GIO5 CABLE (12m)	4499271200
Sensor strap mounted SMS - Grey	9607330010
sensor strap 17.5	9607331170
sensor strap 19.5	9607331190
sensor strap 22.5	9607331220
sensor strap 24.5	9607331240



Independent Temperature Management Solutions

Temp/RH USB Data Logger

Temperature Recorder

This Temp/RH USB Data Logger measures and stores up to 16382 temperature readings between -35°C and +80°C. The user can directly plug the device into a PC's USB port and easily setup the data logger (logging rate, start time, alarms). Once required, the stored data can be quickly downloaded via the windows control software.



Temperature, humidity and dew point recorder

In comparison to the model above, this Temp/RH USB Data Logger records relative humidity level, from 0% to 100% in addition to the temperature logging. Both devices are supplied with a long-life lithium battery (1 year) and green/red LEDs for status indication. These data loggers are best suited for applications not subject to EN 12830 regulation (box size below 10 cubic metres).

USB interface for set-up and data download

- User-programmable alarm thresholds for window controls
- Status indication via red and green LEDs
- Supplied with replaceable internal lithium battery

TEMP/RH USB DATA LOGGER DESCRIPTION	PART NO
Temp/RH USB Data Logger temperature	204-1881

USB Data Collector

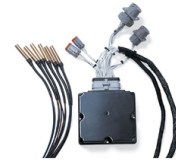
The Data Collector is the perfect complement to the USB Data Logger. This USB device can gather the data of up to 500 USB Data Loggers ‘on the go’, without extra cables or connections. Thanks to the mini USB port, the files gathered in the Data Collector can easily be transferred to a PC at a later time. The Data Collector has a colour touchscreen LCD that allows easy navigation and clear temperature graph display. The device comes with a lithium battery that can last up to 8 hours and is rechargeable through a PC. This utility tool is ideal for activation, setup and download in the field of any TK USB Data Logger.



DESCRIPTION	PART NO
USB Data Collector	2042368

DAS Data Acquisition System

Thermo King’s DAS is a secure, totally independent temperature recorder that keeps a precise record of cargo temperatures from the time the cargo is loaded to final delivery. It includes its own memory and internal real-time clock, and can accommodate up to six independent, directly connected temperature sensors. At the same time, the DAS connects to the refrigeration unit’s controller to provide additional data.



Key Features

- Provides independent documentation of cargo temperatures during transport
- Developed and tested to comply with all European temperature recording requirements
- Compatible with Wintrac and TrackKing

DAS DESCRIPTION	PART NO
DAS IV-Kit Truck T-Series SR-2/SR-3	401125
Data Logger DAS IV base assembly	452247

TouchPrint Printer

Intuitive and flexible printing operations

The new TouchPrint printer from Thermo King offers you the perfect way to provide up-to-the-minute details of the quality of goods upon delivery. This ensures that all goods have been transported in perfect controlled temperature conditions.



The TouchPrint printer has been specifically developed to connect to any DAS or CargoWatch data logger, allowing alignment of printed information with reefer running operations. The delivery or journey ticket (in tabular form) shows the start date and time of the journey, the date and time stamp for printing, the unit set point and the data logger sensor temperature readings (up to 6).

The TouchPrint includes 2 modes of operation: either time-based printing or Start Of Trip printing. Its built-in memory enables to retrieve old records from up to 1 year ago.

The printer has been designed to be easily mounted on trailer bodies together with Thermo King SL, SLX and SLXi units, and is IP65-certified thanks to its enclosure.

Key Features

- Easy operations through touchscreen function
- Connection to Thermo King CargoWatch and DAS IV Data Logger
- Soft copy export of tickets to USB flash drive
- High speed thermal printer for quick printout

DESCRIPTION	PART NO
TOUCHPRINT PRINTER	401249
KIT TOUCHPRINT PRINTER TRAILER	401250

TouchLog Datalogger

Temperature data capture and printing for all refrigerated vehicles

Thermo King’s TouchLog data logger is compact, easy to use, flexible to download and quick to generate printouts. The TouchPrint is an innovative Data Logger with advanced features that respond to multiple needs. The key focus is on accurate readings, flexible export options and an intuitive interface. In terms of certification, this temperature recorder fulfils all the food transport standards: EN 12830, E type approval and WELMEC 7.2. This product is very modular as it can be inserted into a standard radio DIN slot, fitted with an IP 66 box for external mount or placed on a dashboard given its light and compact size. Equipped with its own sensors, this temperature monitoring device is suitable for use with all makes of temperature controlled equipment.



Key Features

- Simple and clear touchscreen display
- Temperature sensors and Thermo King set point reading
- Soft copy export of tickets to USB flash drive
- High speed thermal printer for quick printout
- Compatible with TracKing and Wintrac

DESCRIPTION	PART NO
TOUCHLOG STANDARD	401451
TOUCHLOG PREMIUM	401452
KIT TOUCHLOG STANDARD TRAILER	401465
KIT TOUCHLOG PREMIUM TRAILER	401466
KIT TOUCHLOG STANDARD TRUCK	401467
KIT TOUCHLOG PREMIUM TRUCK	401468
KIT TOUCHLOG PREMIUM A-SERIES	401557

wLog

Reduce downtime while monitoring and collecting essential data on the temperature and humidity of your cargo with Thermo King's wireless EN12830 certified wLog datalogger. Temperature data is vital for ensuring the quality of cargoes in today's transport industry, especially for sensitive or perishable items. Not having any wires means installation is fast and easy and could get you back on the road in no time. Once wLog datalogger is installed, you can access, monitor, collect, and store temperature and humidity data using Bluetooth. wLog datalogger works seamlessly with our mobile app and our online platform TrackKing to ensure you have all the information you need in just a few clicks – wherever you are. wLog datalogger provides your reports in an easy to share paperless PDF format. Its replaceable battery makes wLog a durable solution.



DESCRIPTION	PART NO
KIT wLog STANDARD (CERTIFICATE INCLUDED)	401700
KIT wLog PREMIUM (CERTIFICATE INCLUDED)	401701

Cable Thermometer

Portable pallet-level thermometer with extension cable

Ideal for quality control during loading and unloading of goods. The durable design ensures impact resistance in busy logistics environments.



- Range -50°C to 150°C
- Resolution 0.1°C
- Accuracy +/-0.3°C

DESCRIPTION	PART NO
Cable Thermometer	2040900

AFTERMARKET PART NO	POINT OF SALE PART NO
2040900	

Door Switch

Economy, security and noise reduction for delivery operations

This low-profile, durable switch automatically turns off the refrigeration unit when the door is opened and restarts when the door is closed.



Key Features

- Reduced run time: less maintenance and lower fuel consumption
- Less heat gain into the load at delivery: improved temperature control
- Greater security: door opening events can be logged or trigger an alarm
- Greater safety: automatically turn interior trailer lights on and off as they are needed
- Zero refrigeration unit noise during delivery

DESCRIPTION	PART NO
Kit Door Switch 3 wire SR3/2	401135
Kit Door Switch 2 wire SR3/2	400907

AIA Temperature Sensor

Economy, security and noise reductions for delivery operations

The AIA (Accurate Internal Air) sensor measures the internal air for climate control systems. Efficient, reliable and high-performance temperature control requires impeccable accuracy. This temperature sensor measures real internal air temperature without the influence of internal surface temperature, providing optimum load protection. Compared to traditional wall-mounted sensors the difference in measured temperature is up to 7°C.



Key Features

- No influence from internal surface temperature
- Stainless steel plate installed in the trailer body
- Mounted onto a flexible rubber tube for easy bending

DESCRIPTION	PART NO
DAS	417873
SR-2/3 (CargoWatch)	417874
TKDL-Thermo King recorders, data loggers and universal recorder	417875

Energy Curtain

The Energy Curtain ensures that produce is delivered in optimum condition by minimising exposure to outside ambient temperature. The curtain is a cost-effective and energy-saving solution and can be customised to any truck size.



Key Features

- Reduces the time that the interior is exposed to ambient temperature by 90-95%
- Reduces fuel consumption by as much as 4-7 litres a day
- Cost of the curtain is won back over a period of approximately 2 years

DESCRIPTION	PART NO
Energy Curtain	2060230

AFTERMARKET PART NO	POINT OF SALE PART NO
2060230	

Top Freeze Protect

DAC (Discharge Air Control) Kit

Key Features

- Controls discharge air but no control of return air
- Reduces risk of fresh products being damaged by frost
- Supplied in a kit ready to install
- Improves product quality
- To be used for Spectrum zone 1 only
- Easy to activate or deactivate (ON/OFF switch)



DESCRIPTION	PART NO
DAC kit for SLX Spectrum	401226
DAC kit for SL range	401126
DAC kit for SLX S2/3 evaporators	401229

DAC kit for SLX Spectrum

DAC (Discharge Air Control) Kit

Key Features

- Controls discharge air but no control of return air
- Reduces risk of fresh products being damaged by frost
- Supplied in a kit ready to install
- Improves product quality
- To be used for Spectrum zone 1 only
- Easy to activate or deactivate (ON/OFF switch)



AFTERMARKET PART NO	POINT OF SALE PART NO
401226	401226

DAC kit for SLX S2/3 evaporators

DAC (Discharge Air Control) Kit

Key Features

- Controls discharge air but no control of return air
- Reduces risk of fresh products being damaged by frost
- Supplied in a kit ready to install
- Improves product quality
- To be used for Spectrum zone 1 only
- Easy to activate or deactivate (ON/OFF switch)



AFTERMARKET PART NO	POINT OF SALE PART NO
401229	401229

Handheld sensor for CargoWatch Data Logger

Monitors temperature where it matters: in the product

- Enables actual load temperature data to be tracked and stored
- Eliminates concerns over temperature spikes that can occur with air sensors
- Both load and air temperature data can be downloaded together
- Up to six sensors can be deployed in one vehicle
- Food-safe stainless steel construction with accuracy of +/- 1°C

DESCRIPTION	PART NO
Sensor temp. food safe	420474

Sensor temp. food safe

Monitors temperature where it matters: in the product

- Enables actual load temperature data to be tracked and stored
- Eliminates concerns over temperature spikes that can occur with air sensors
- Both load and air temperature data can be downloaded together
- Up to six sensors can be deployed in one vehicle
- Food-safe stainless steel construction with accuracy of +/- 1°C

AFTERMARKET PART NO	POINT OF SALE PART NO
420474	

Sensor Temperature Handheld A Series

Monitors temperature where it matters: in the product

- Enables actual load temperature data to be tracked and stored
- Eliminates concerns over temperature spikes that can occur with air sensors
- Both load and air temperature data can be downloaded together
- Up to six sensors can be deployed in one vehicle
- Food-safe stainless steel construction with accuracy of +/- 1°C

AFTERMARKET PART NO	POINT OF SALE PART NO
424711	

Null-host Kit

Fuel savings for multi temperature trailers

Multi temperature vehicles need to be highly flexible in operation and no one wants to refrigerate an unused compartment. Remote evaporators can easily be switched off in zones 2 or 3, but when refrigeration is not required in the host zone, this kit now enables the operator to turn off this zone as well and save fuel that would otherwise be wasted.

Key Features

- Reduces fuel consumption by up to 4%
- Simple to operate
- Remote evaporator zones continue to operate normally when host is in null mode

DESCRIPTION	PART NO
Null-host Kit	401196



Fuel Management

Fuel Tank Cleaning Unit

Cleaner fuel means lower costs

The Fuel Tank Cleaning Unit is a mobile unit ideal for on-site cleaning of any diesel fuel tanks, including tractors, refrigeration units and other applications. It gives dealers the opportunity to offer an additional service to their customers by treating and removing potentially damaging contaminants from their fuel tanks.



The unit quickly and efficiently removes all water and particles from the fuel tank. Combined with the Thermo King fuel filter range the Fuel Tank Cleaning Unit continues our mission towards reducing fuel inconsistency issues in the field.

Key Features

- Mobile unit that delivers fast on-site fuel cleaning Protects engines from failure and unscheduled shutdowns due to contaminated fuel
- Removes water & particle content in diesel fuels Eliminates cost of replacement fuel
- Can be offered as a service to Thermo King customers

DESCRIPTION	PART NO
Fuel Tank Cleaning Unit	2041966
Replacement filter	131287

AFTERMARKET PART NO	POINT OF SALE PART NO
2041966	

Replacement filter

Cleaner fuel means lower costs

The Fuel Tank Cleaning Unit is a mobile unit ideal for on-site cleaning of any diesel fuel tanks, including tractors, refrigeration units and other applications. It gives dealers the opportunity to offer an additional service to their customers by treating and removing potentially damaging contaminants from their fuel tanks.



The unit quickly and efficiently removes all water and particles from the fuel tank. Combined with the Thermo King fuel filter range the Fuel Tank Cleaning Unit continues

our mission towards reducing fuel inconsistency issues in the field.

Key Features

- Mobile unit that delivers fast on-site fuel cleaning Protects engines from failure and unscheduled shutdowns due to contaminated fuel
- Removes water & particle content in diesel fuels Eliminates cost of replacement fuel
- Can be offered as a service to Thermo King customers

AFTERMARKET PART NO	POINT OF SALE PART NO
131287	

Electronic Fuel Capture

Thermo King’s fuel level sensors are compatible with the Thermo King polyethylene and steel fuel tanks and with other competitive fuel tanks.

They enable fuel level information to be visualised by remote display, stored in the memory of the Thermo King data logger or used for online fuel level monitoring by Thermo King’s telematics solution TracKing.



CONTROLLER	CABLE
DAS	100414 / 418131
Any	N/A
SR 2	100414

TK FUEL TANK	GAUGE & DIAL	DIAL
TK Polyethylene 230 l (before July 2010)	130794 / 419222	419222
TK Aluminium Fuel Tank 100/190 l	N/A	419223
TK Old Steel Fuel Tank 190 l	131019	N/A
TK Polyethylene 90 l	131132	419223

COMPETITOR FUEL TANK	GAUGE & DIAL	DIAL
Schmitz (new)	131120	419704
Krone (new)	131001	419223
Schmitz & Krone (old plastic cylindrical)	131001	N/A
Lamberet (plastic)	131124	N/A
G&A (plastic-old)	131125	N/A
G&A (plastic-new)	Under development	N/A
Montracon (plastic)	132149	N/A
Chereau (plastic)	N/A	N/A

Fuel Storage

Keep running for longer

The Thermo King fuel tank is an essential component of a total fuel management system.

When integrated with Thermo King’s fuel level sensors, fuel level displays and anti-siphon devices, it helps you manage and secure your fuel consumption and costs more efficiently.

Thermo King offers a 230 litre polyethylene tank for trailer applications. The impact and corrosion-resistant Polyethylene Fuel Tank with 230 litre capacity is safe, light and easy to install.

The high capacity ensures fewer fuel stops and increased uptime to keep you running for longer.

Start protecting your fuel investment today with the Thermo King anti-siphon device.

DESCRIPTION	TANK INSTALLATION KIT	ANTI-SIPHON DEVICE	REPLACEMENT FUEL CAPS
Plastic fuel tank 230 l	120839	900351	130960
Plastic fuel tank 90 l		120950	119629
Electronic fuel level dial gauge		131132	

Plastic fuel tank 230 l

Keep running for longer

The Thermo King fuel tank is an essential component of a total fuel management system.

When integrated with Thermo King’s fuel level sensors, fuel level displays and anti-siphon devices, it helps you manage and secure your fuel consumption and costs more efficiently.

Thermo King offers a 230 litre polyethylene tank for trailer applications. The impact and corrosion-resistant Polyethylene Fuel Tank with 230 litre capacity is safe, light and easy to install.

The high capacity ensures fewer fuel stops and increased uptime to keep you running for longer.



Start protecting your fuel investment today with the Thermo King anti-siphon device.

AFTERMARKET PART NO	POINT OF SALE PART NO
120839, 900351(kit)	720503

Plastic fuel tank 90 l

Keep running for longer

The Thermo King fuel tank is an essential component of a total fuel management system.

When integrated with Thermo King’s fuel level sensors, fuel level displays and anti-siphon devices, it helps you manage and secure your fuel consumption and costs more efficiently.

Thermo King offers a 230 litre polyethylene tank for trailer applications. The impact and corrosion-resistant Polyethylene Fuel Tank with 230 litre capacity is safe, light and easy to install.

The high capacity ensures fewer fuel stops and increased uptime to keep you running for longer.

Start protecting your fuel investment today with the Thermo King anti-siphon device.



AFTERMARKET PART NO	POINT OF SALE PART NO
120950TKA (standard, kit)	702802

Kit Installation Bracket-90l Plastic Fuel Tank

Keep running for longer

The Thermo King fuel tank is an essential component of a total fuel management system.

When integrated with Thermo King’s fuel level sensors, fuel level displays and anti-



siphon devices, it helps you manage and secure your fuel consumption and costs more efficiently.

Thermo King offers a 230 litre polyethylene tank for trailer applications. The impact and corrosion-resistant Polyethylene Fuel Tank with 230 litre capacity is safe, light and easy to install.

The high capacity ensures fewer fuel stops and increased uptime to keep you running for longer.

Start protecting your fuel investment today with the Thermo King anti-siphon device.

AFTERMARKET PART NO	POINT OF SALE PART NO
900428TKA (Truck)	702773

Anti-siphon for plastic fuel tank 230 L

Keep running for longer

The Thermo King fuel tank is an essential component of a total fuel management system.

When integrated with Thermo King’s fuel level sensors, fuel level displays and anti-siphon devices, it helps you manage and secure your fuel consumption and costs more efficiently.

Thermo King offers a 230 litre polyethylene tank for trailer applications. The impact and corrosion-resistant Polyethylene Fuel Tank with 230 litre capacity is safe, light and easy to install.

The high capacity ensures fewer fuel stops and increased uptime to keep you running for longer.

Start protecting your fuel investment today with the Thermo King anti-siphon device.



AFTERMARKET PART NO	POINT OF SALE PART NO
130960	

Polyethylene Fuel Tank

Keep running for longer

For any customer, keeping fuel costs down and staying within fuel capacities specific to different regions are today’s biggest challenges. Thermo King now offers a 90 litre Polyethylene Fuel Tank option that will cater for countries with two fuel taxes and those countries that have tight regulation on fuel volumes.



The Thermo King Polyethylene Fuel Tank is an essential component of a total fuel management system. When integrated with Thermo King’s fuel level sensors and optional lockable caps, it enables you to manage and secure your fuel consumption and costs more efficiently. The additional on-truck capacity provided by the Thermo King Polyethylene Fuel Tank cuts running costs and reduces the impact of fuel restrictions in your region.

The impact and corrosion-resistant fuel tank with 90 litre capacity is safe, light and easy to install.

Key Features

- Approved for diesel and bio-diesel (B7)
- Vibration resistant to Thermo King standards
- Lightweight and impact and corrosion-resistant polyethylene
- TUV approved
- Uniquely designed to reduce contaminants entering the fuel system
- Mechanical fuel gauge with option to upgrade to electric monitoring
- Galvanised steel drain plug as standard
- Option to upgrade to a lockable fuel cap
- Quick fuel line connections

DESCRIPTION	PART NO
Installation kit	900428
LED corner mount display	401032
Lockable cap	119629

Aluminium Fuel Tank

Thermo King’s new aluminium diesel fuel tanks are purposely-designed for Thermo King refrigeration systems. They are exceptionally robust, light-weight and have additional corrosion resistance associated with aluminium.



Ideal for the most extreme environments, they are configured to integrate seamlessly with Thermo King’s fuel tank upgrades for added security and fuel level monitoring. The new tank has been ergonomically designed to facilitate easier accessibility to reduce installation times.

Aluminium has been chosen for its low weight, exceptional strength and durability. The tanks are available in 100 and 190 litre sizes, the smaller tank being ideal where fuel volumes are subject to limitations due to local regulations.

Key Features

- 50% weight saving on tank
- TUV approved
- Bio diesel (B7) approved
- Easy & faster installation
- High corrosion resistance
- Sump-less design for maximum clearance
- Mechanical fuel gauge as standard
- Easy upgrade to electronic monitoring
- Extra security options available

DESCRIPTION	PART NO
Tank fuel alum. 190 l-18"	120978
Tank fuel alum. 100 l-18"	120979
Kit install fuel tank 18" (100/190 l)	902417
Electric fuel gauge dial	419223
Lockable fuel cap	118053
Anti-siphon	130878

Anti-siphon for aluminum tank 190L

Thermo King’s new aluminium diesel fuel tanks are purposely-designed for Thermo King refrigeration systems. They are exceptionally robust, light-weight and have additional

corrosion resistance associated with aluminium.

Ideal for the most extreme environments, they are configured to integrate seamlessly with Thermo King’s fuel tank upgrades for added security and fuel level monitoring. The new tank has been ergonomically designed to facilitate easier accessibility to reduce installation times.



Aluminium has been chosen for its low weight, exceptional strength and durability. The tanks are available in 100 and 190 litre sizes, the smaller tank being ideal where fuel volumes are subject to limitations due to local regulations.

Key Features

- 50% weight saving on tank
- TUV approved
- Bio diesel (B7) approved
- Easy & faster installation
- High corrosion resistance
- Sump-less design for maximum clearance
- Mechanical fuel gauge as standard
- Easy upgrade to electronic monitoring
- Extra security options available

AFTERMARKET PART NO	POINT OF SALE PART NO
130878 (optional)	

UltraSonic Fuel Sensor

The new Thermo King UltraSonic Fuel Sensor with patent-pending technology has been developed to handle transport- specific conditions and to notify the driver long before fuel levels run dangerously low.



Key Features

- High accuracy
- Market-leading reliability compared to traditional resistive float arm sender
- Compact design
- Shuts unit down before the tank empties
- Measures right to the bottom of the tank
- No moving parts

Avoid costly out-of-fuel shutdowns

Compared to traditional fuel level sensor technologies, the UltraSonic Fuel Sensor provides the most accurate fuel level reading, no matter how full the tank and displays even the smallest changes in fuel level. Traditional gauges use a mechanical float gauge translated into an electric resistance to give digital outputs which are less accurate due to this conversion and distance travelled from the tank to the controller. UltraSonic has no moving parts and uses sound waves to measure the time taken for the echo to return, thus guaranteeing higher accuracy.

ULTRASONIC FUEL SENSOR		PART NO
Fuel Sensor for Schmitz fuel tanks (including Harness)		401432
Fuel Sensor Ultrasonic TK 190L AI (including Harness)		401127TKA
Fuel Sensor Ultrasonic TK 230L (including Harness)		401275

Fuel Sensor for Schmitz fuel tanks (including Harness)

The new Thermo King UltraSonic Fuel Sensor with patent-pending technology has been developed to handle transport- specific conditions and to notify the driver long before fuel levels run dangerously low.



Key Features

- High accuracy

FUEL MANAGEMENT

- Market-leading reliability compared to traditional resistive float arm sender
- Compact design
- Shuts unit down before the tank empties
- Measures right to the bottom of the tank
- No moving parts

Avoid costly out-of-fuel shutdowns

Compared to traditional fuel level sensor technologies, the UltraSonic Fuel Sensor provides the most accurate fuel level reading, no matter how full the tank and displays even the smallest changes in fuel level. Traditional gauges use a mechanical float gauge translated into an electric resistance to give digital outputs which are less accurate due to this conversion and distance travelled from the tank to the controller. UltraSonic has no moving parts and uses sound waves to measure the time taken for the echo to return, thus guaranteeing higher accuracy.

AFTERMARKET PART NO	POINT OF SALE PART NO
	401432

Fuel Sensor Ultrasonic TK 190L AI (including Harness)

The new Thermo King UltraSonic Fuel Sensor with patent-pending technology has been developed to handle transport- specific conditions and to notify the driver long before fuel levels run dangerously low.



Key Features

- High accuracy
- Market-leading reliability compared to traditional resistive float arm sender
- Compact design
- Shuts unit down before the tank empties
- Measures right to the bottom of the tank
- No moving parts

Avoid costly out-of-fuel shutdowns

Compared to traditional fuel level sensor technologies, the UltraSonic Fuel Sensor provides the most accurate fuel level reading, no matter how full the tank and displays even the smallest changes in fuel level. Traditional gauges use a mechanical float gauge

translated into an electric resistance to give digital outputs which are less accurate due to this conversion and distance travelled from the tank to the controller. UltraSonic has no moving parts and uses sound waves to measure the time taken for the echo to return, thus guaranteeing higher accuracy.

AFTERMARKET PART NO	POINT OF SALE PART NO
401127TKA	401127TKA

Fuel Sensor Ultrasonic TK 230L (including Harness)

The new Thermo King UltraSonic Fuel Sensor with patent-pending technology has been developed to handle transport- specific conditions and to notify the driver long before fuel levels run dangerously low.



Key Features

- High accuracy
- Market-leading reliability compared to traditional resistive float arm sender
- Compact design
- Shuts unit down before the tank empties
- Measures right to the bottom of the tank
- No moving parts

Avoid costly out-of-fuel shutdowns

Compared to traditional fuel level sensor technologies, the UltraSonic Fuel Sensor provides the most accurate fuel level reading, no matter how full the tank and displays even the smallest changes in fuel level. Traditional gauges use a mechanical float gauge translated into an electric resistance to give digital outputs which are less accurate due to this conversion and distance travelled from the tank to the controller. UltraSonic has no moving parts and uses sound waves to measure the time taken for the echo to return, thus guaranteeing higher accuracy.

AFTERMARKET PART NO	POINT OF SALE PART NO
401275	401275

Service Kit

Genuine parts guarantee maximum uptime

Thermo King units must operate dependably in extreme and challenging environments and so regular scheduled service is essential. This service will only be effective if it is performed by qualified technicians. Genuine parts should always be used to ensure unit integrity and maximize the lifespan of major components. Thermo King has developed a range of fully featured Service Kits comprising all the parts needed to service a specific unit model. Use of a Service Kit minimizes time spent on diagnosis and sourcing parts as well as delays if parts needed are not in stock. The content of each kit varies according to the unit model and its service interval. Kits typically include filters, belts, driers and gaskets.



Key Features

- Includes all the maintenance parts required to perform a scheduled service.
- Readily available and delivered in one box, under one reference number.
- Priced lower than the sum of the individual items.
- Typical contents:
 - Service B: Filters (fuel ,oil, air)
 - Service C: Filters (fuel ,oil, air), belts, driers, gaskets and hardware.

Fuel Primer Kit

The Fuel Primer Kit consists of a fuel filtration and priming system combined with a 5 micron fuel filter.

Fuel filtration and priming system

Increase uptime and reduce call-out costs.

The 3-in-1 fuel filtration and priming system with heater comprises:

- Fuel filter
- Waterseparator
- Primingpump
- Integratedheater



Key Features

- Removes contaminants from fuel
- Rugged priming pump for fast system priming
- Thermostatically controlled heater element for seasonal usage in low ambients
- Harness & relay to connect to your unit for heater version
- Replaceable fuel filter water separator

Benefits

- Protects injectors and engine from damaging contaminants
- Self priming ensures the avoidance of unnecessary service call out charges
- Eliminates the risk of fuel starvation at low temperatures
- Easy to retrofit with integrated harness
- Relay prevents battery drainage
- Reduces running costs by optimising fuel economy and increases engine life by removing water from fuel before it can cause engine damage

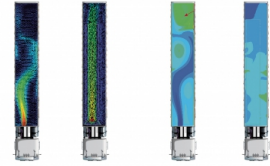


Air Management

Air chute

The importance of air

The cold air circulated throughout the trailer should maintain a uniform temperature to ensure that sensitive cargo is kept in prime condition. In a perfect world, air circulates freely and equally to all parts of the load, from front to rear. In reality, however, multiple factors, including the shape of the load itself and the loading pattern can disrupt the airflow to the point that temperature distribution is sufficiently varied to put the load quality at risk.



Key Features

- Purposed-designed air distribution chute ensures that air leaving the discharge outlet is evenly spread over the entire load, from the front to the back of the trailer.
- 75% shorter than traditional industrial standard resulting in optimum airflow.
- Manufactured in high tensile strength material.
- Quick and easy to install and disconnect during loading and unloading to avoid damage.

The solution

A purpose-designed air distribution chute ensures that air leaving the discharge outlet is evenly spread over the entire load, from the front to the back of the trailer. Thermo King's Air Chute has been developed specifically for a wide range of Thermo King refrigeration units, backed by over 75 years of expertise in the business of moving temperature sensitive goods.

Benefits

- Cargo protection by eliminating short-cycling, top-freezing and hot spots resulting in minimal temperature variance throughout the trailer ($\pm 2^{\circ}\text{C}$).
- Shorter chutes are less likely to get damaged during loading/unloading operation & can be used in conjunction with moveable bulkheads.
- Highly-durable material for longer life.
- Easily disconnected to maximize volume for dry loads.

Specifications

- Optimum design with front & side venting to ensure that airflow and temperature are constant throughout the trailer.
- Supplied in 3.5m lengths which can be used in single/ multi-temperature trailer applications up to 16m in length.
- High-grade, easy-to-clean vinyl with industry leading tear and tensile strength.
- Velcro enabled for faster installation times and rapid removal.

The risk of poor air distribution

The three most common problems are:

- **Short-cycling**, where the discharge air does not travel the full distance due to loading practices and back pressure in the trailer, resulting in uneven temperature and air distribution throughout the trailer.
- **Top-freezing**, where temperature sensitive goods, such as fresh products or pharmaceuticals, are stacked too close to the discharge air stream resulting in frost damage.
- **Hot spots**, or areas within the load space that are starved of temperature-controlled air and become warmer than the temperature selected on the unit thermostat.

With the correct chutes installed, you avoid the consequences of the above common problems associated with the transportation of temperature-sensitive products. The installation of air chutes guarantees more uniform temperature and airflow distribution even if obstructions to the flow caused by improper loading practices or uneven loading exist.

AIR CHUTE	PART NO
Air Chute SLX	902934

Advancer Air straightener

Airflow management for Advancers

The A-Series offers the highest airflow on the market with the highest air throw, which ensures the airflow reaches the rear door of the trailer for a uniform temperature throughout your trailer to, fully protect your cargo. With the optional Advancer Air Straightener, you get additional peace of mind by boosting your airflow and air throw to provide extra cargo safety on longer trailers (up to 15.6m) and partially loaded trailers with cargo only at the rear – all without the need for an additional air chute.



Key features

- Extends the reach of the refrigerated airflow to provide a uniform temperature throughout trailers of up to 15.6m long.
- Saves its airflow for the rear section of the trailer when only partially loaded for added efficiency.
- Eliminates the need for an additional air chute, so does not impact available cargo space.

The solution

The Advancer Air Straightener is a metal grille that is positioned at the front of the trailer, where the air flows into the trailer, pushing the air in the right direction which is straighter than with a normal grille. The Thermo King Advancer Air Straightener has been designed specifically for this unit, ensuring that it is more compact and takes up less space than other solutions in the market.

Benefits

- Protects cargo by ensuring a uniform temperature throughout the trailer.
- No need for an air chute which reduces the amount of space the air straightener requires.





ColdCube™

ColdCube™ Connect Containers

ColdCube™ Containers: a robust, portable and easily adaptable entry level refrigeration container option, which serves as a mobile cooler or freezer. It can be loaded quickly into any standard van/truck or plugged into a standard wall outlet for continuous cooling. The ColdCube™ comes in a variety of cooling and freezing units to best fit customer needs. ColdCube™ Containers can be used for a wide range of applications such as mobile hospitals, rental services, transportation of food (e.g. for catering events) and many more.



PART NO	STYLE	GROSS CAPACITY (L)	MINIMUM TEMP.	MAX POWER (AMPS 12V DC)	REFRIGERATION TYPE	EXTERNAL DIMENSIONS (MM)	INTERNAL DIMENSIONS (MM)	WEIGHT (KG)
6100235	F	32L	> -24°C	9	R-134a	670x390x480	327x223x344	22.5
6100237	F	82L	> -24°C	9	R-134a	940x560x551	523x358x366	35
6100239	C	140L	> -10°C	10	R-134a	1000x620x710	620x369x510	52
6100240	C & H	140L	+30°C to -10°C	10	R-134a	1000x620x710	540x369x510	54
6100241	F	140L	> -21°C	18	R-134a	1000x620x710	590x369x510	55
6100243	C	330L	> +0°C	10	R-134a	1020x1000x1000	810x550x660	80
6100244	C & H	330L	+30°C to +0°C	10	R-134a	1020x1000x1000	730x550x660	83
6100245	F	330L	> -21°C	18	R-134a	1020x1000x1000	780x550x660	83
6100247	C	720L	> +0°C	20	R-134a	1400x1100x1100	1020x850x780	144
6100248	C & H	720L	+30°C to +0°C	20	R-134a	1400x1100x1100	940x850x780	147
6100249	F	720L	> -24°C	32	R-404a	1400x1100x1100	980x850x780	150
6100251	C	915L	> +0°C	18	R-134a	1510x1200x1180	1210x934x830	160
6100252	F	915L	> -21°C	25	R-404a	1510x1200x1180	1210x934x830	165

COLDCUBE™ MODEL	SHELF	TRANSPORT KITS TROLLEYS	TRANSPORT KITS PALLET BASE	BLUETOOTH MODULE	PLASTIC STRIP CURTAIN	FIXING KIT / TIE DOWN KIT	INTERNAL FAN KIT	AC/DC CONVERTER	HANDLE LOCK KIT
6100235	Standard wire basket	-	-	401420	-	-	781977	401421	-
6100237	Standard wire basket	-	-	401420	-	-	781978	401421	-
6100237	936041 (5 MAX)	Standard wire basket	-	401420	6100219	6100206	781979	401421	903950
6100240	936041 (5 MAX)	6100202	-	401420	6100219	6100206	-	401421	903950
6100241	936041 (5 MAX)	6100202	-	401420	Standard	6100206	781977	401422	903950
6100243	936042 (3 MAX)	6100203	6100204	401420	6100220	6100206	781979	401421	903950
6100244	936042 (3 MAX)	6100203	6100204	401420	6100220	6100206	-	401421	903950
6100245	936042 (3 MAX)	6100203	6100204	401420	Standard	6100206	781989	401422	903950

6100247	935838 (5 MAX)	-	-	401420	Standard	903951	781980	401422	-
6100248	935838 (5 MAX)	-	-	401420	Standard	903951	-	401422	-
6100249	935838 (5 MAX)	-	-	401420	Standard	903951	781980	401423	-
6100251	936043	6100218	6100218	401420	-	936472	-	401422	-
6100252	936043	6100218	6100218	401420	-	936472	-	401423	-

ColdCube™ Connect - Pharma Containers

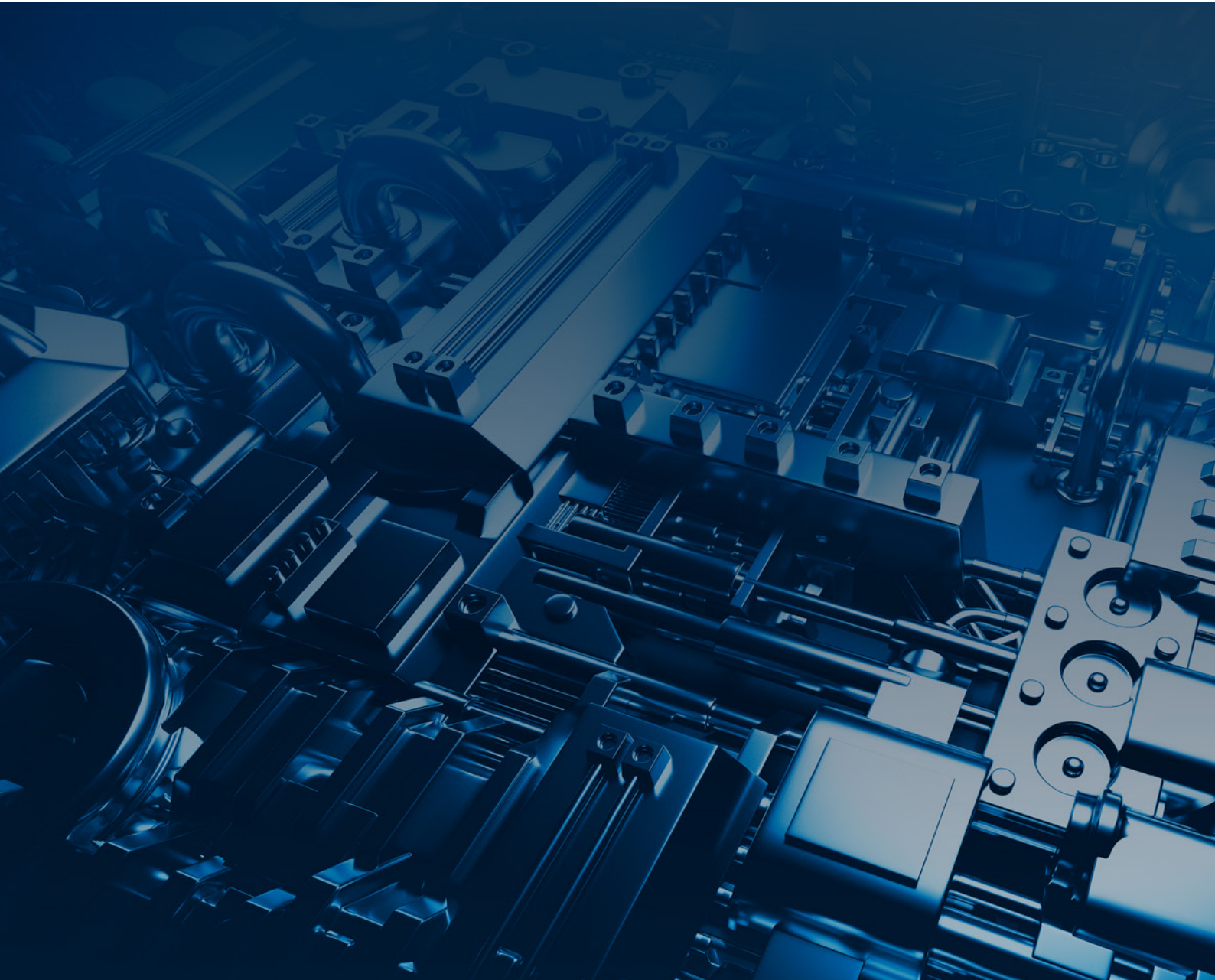
ColdCube™ Pharma containers are designed to meet the stringent temperature control required for pharmaceutical transport. The heating function allows for more precise temperature control within the cargo space, regardless of outside ambient conditions. The extended temperature range means more flexibility in the transport services offered. Extensive performance testing includes thermal mapping to ensure that ColdCube™ Pharma can perform to the highest standards in all conditions.

ColdCube™ Pharma containers are constructed from materials proven to be safe for pharmaceutical transport.

Key Features

- 12/24V DC or optional 110-240V AC* (consumes 9–25 amps at 12V DC) with optional AC to DC power rectifier
- Hermetic digital compressor
- Heavily insulated (up to 130 mm thick)
- Digital temperature control with readout through Bluetooth & App • R-134a refrigerant (720L uses R-404A)
- CE, TUV & optional PharmaSolutions Certification*
- 2 year warranty on parts
- Wide range of accessories available to cater for different applications
- Plastic strip curtains are standard in all Pharma containers

DESCRIPTION	PART NO
ColdCube™ Pharma 32 l	6100236
ColdCube™ Pharma 82 l	6100238
ColdCube™ Pharma 140 l	6100242
ColdCube™ Pharma 330 l	6100246
ColdCube™ Pharma 720 l	6100250
ColdCube™ Pharma 915 l	6100253



 **THERMO KING**

Thermo King – by Trane Technologies (NYSE: TT), a global climate innovator – is a worldwide leader in sustainable transport temperature control solutions. Thermo King has been providing transport temperature control solutions for a variety of applications, including trailers, truck bodies, buses, air, shipboard containers and railway cars since 1938.

For further information
europe.thermoking.com

Find your nearest dealer on
dealers.thermoking.com

TRANE
TECHNOLOGIES